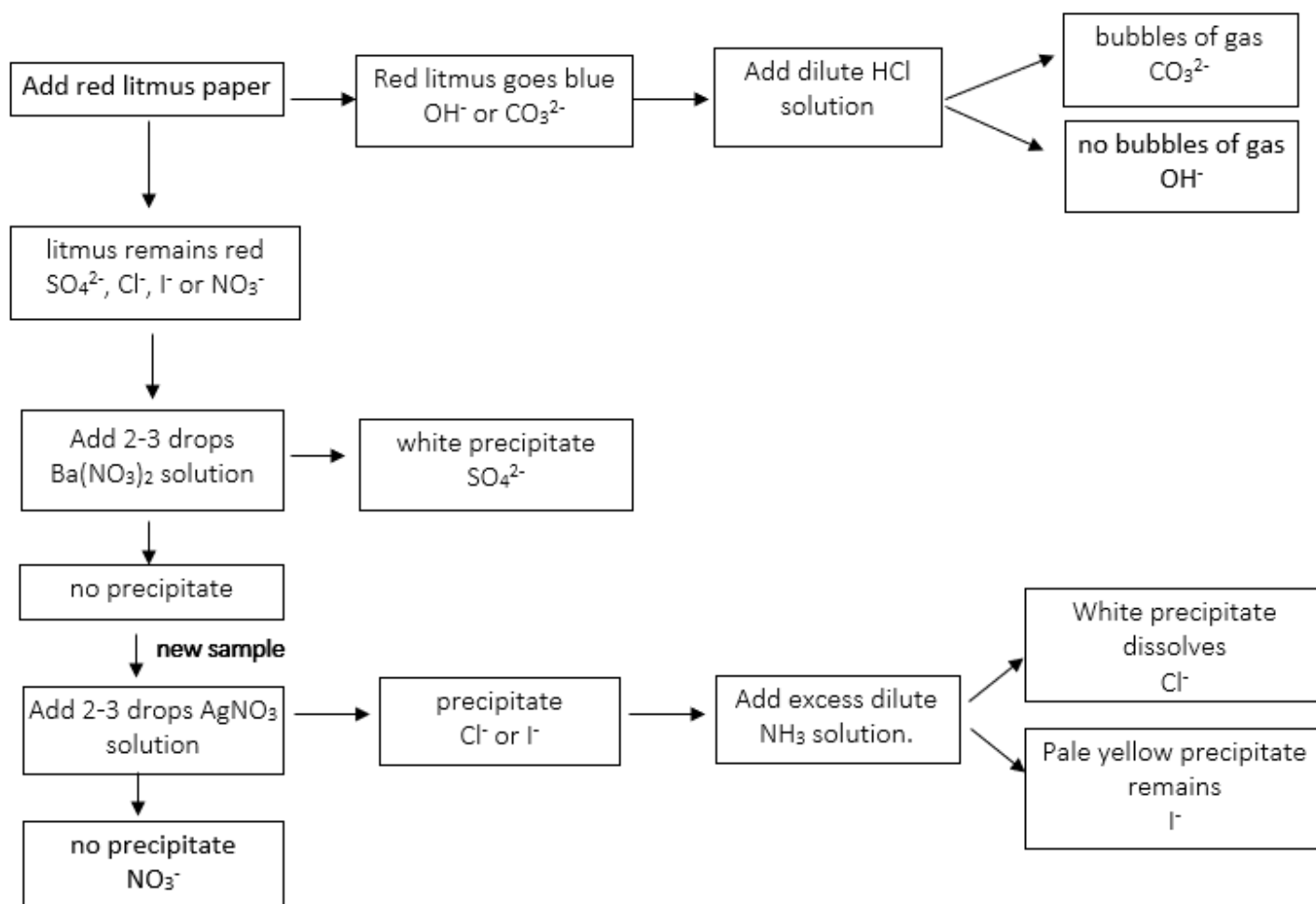


RESOURCE SHEETS

The Solubility Rules	Formulae of Potential Complex ions
<ol style="list-style-type: none"> All Group 1 compounds are soluble All nitrate compounds are soluble Most sulfates are soluble except for calcium sulfate, barium sulfate and lead sulfate Most halides (chlorides & iodides) are soluble except for those salts with silver and lead All carbonates are insoluble except those of Group 1 All oxides and hydroxides are insoluble except those of Group 1 	<ul style="list-style-type: none"> $[\text{FeSCN}]^{2+}(\text{aq})$ $[\text{Zn}(\text{OH})_4]^{2-}(\text{aq})$ $[\text{Pb}(\text{OH})_4]^{2-}(\text{aq})$ $[\text{Al}(\text{OH})_4]^{-}(\text{aq})$ $[\text{Ag}(\text{NH}_3)_2]^{+}(\text{aq})$ $[\text{Zn}(\text{NH}_3)_4]^{2+}(\text{aq})$ $[\text{Cu}(\text{NH}_3)_4]^{2+}(\text{aq})$

Flow Chart for Anions



Flow Chart for Cations

